



DRIVER INSTALLATION GUIDE

© Copyright 2011 – 2018 Newland Payment Technology Co., LTD All rights reserved.

Newland Payment is a registered trademark of Newland Payment Technology Co., LTD

Newland Payment and the Newland Payment logo are trademarks, service marks or registered trademarks or service marks of Newland Payment Technology Co., LTD All other trademarks are the property of their respective owners.

All information is subject to change without notice and Newland Payment Technology Co., LTD does not warrant the information's accuracy or correctness.

Any Newland Payment software described in this document is subject to a Software License Agreement. Please refer to the Newland Software License Agreement for information regarding the terms of use.



TABLE OF CONTENTS

1	Introduction	4
1.1	Overview	4
1.2	Terminals supported.....	4
1.3	Operating systems supported.....	4
2	Installation steps	4
2.1	First installation	4
2.2	Re-install	4
2.3	Installation suspension	5
3	Installation exception handling	5
4	Common exception handling.....	5
4.1	Activation system	5
4.2	Enable driver forced signature.....	5
4.3	win7*64 System.....	6
4.4	Unidentified device	7
4.5	Manually update the driver	8



1 Introduction

1.1 Overview

Before using NPT PC tools, such as Downloader tools, AppSignature tools, Security tools, you need to install the NPT PC driver. After the driver is successfully installed, the tool can interact with the POS for usb or serial port.

1.2 Terminals supported

All Linux and android based products from Newland Payment.

1.3 Operating systems supported

Windows 7/8.1/10

2 Installation steps

2.1 First installation

Open the Driver Installation Directory and run DriverInstall.exe, Installation will be completed automatically. The installation process will take a few seconds, generally no more than 30 seconds.

If this driver is installed for the first time, the installation interface information is as follows

```
Installing NewLand POS unified drive, please wait a moment...
Successfully installed the usb driver.
Successfully installed the adb driver.
Successfully installed the qusbser drive.
Successfully installed the modem driver.
Successfully installed the wwan driver.
NewLand POS unified drive is successfully installed.
Press any key to exit
```

2.2 Re-install

If the driver was previously installed and installed again, a message similar to the following will be displayed.



```
Installing NewLand POS unified drive, please wait a moment...
Found usb driver installed,successful update.
Successfully installed the adb driver.
Found qusbser driver installed,successful update.
Found modem driver installed,successful update.
Found wwan driver installed,successful update.
NewLand POS unified drive is successfully installed.
Press any key to exit
```

2.3 Installation suspension

If the interface is installed, the cursor does not go down after waiting for a few tens of seconds. It may be that you accidentally clicked the console with the mouse to make the console enter the "quick edit mode", which will block the program. Click the right mouse button. Or press "Enter" to cancel the mode, the installer will continue

```
Installing NewLand POS unified drive, please wait a moment...
Found usb driver installed,successful update.
```

3 Installation exception handling

If the installation interface has the word "Failed to.....", it will return an error code, feedback the error code to the NPT related personnel or send an email to yangming@newlandpayment.com

4 Common exception handling

4.1 Activation system

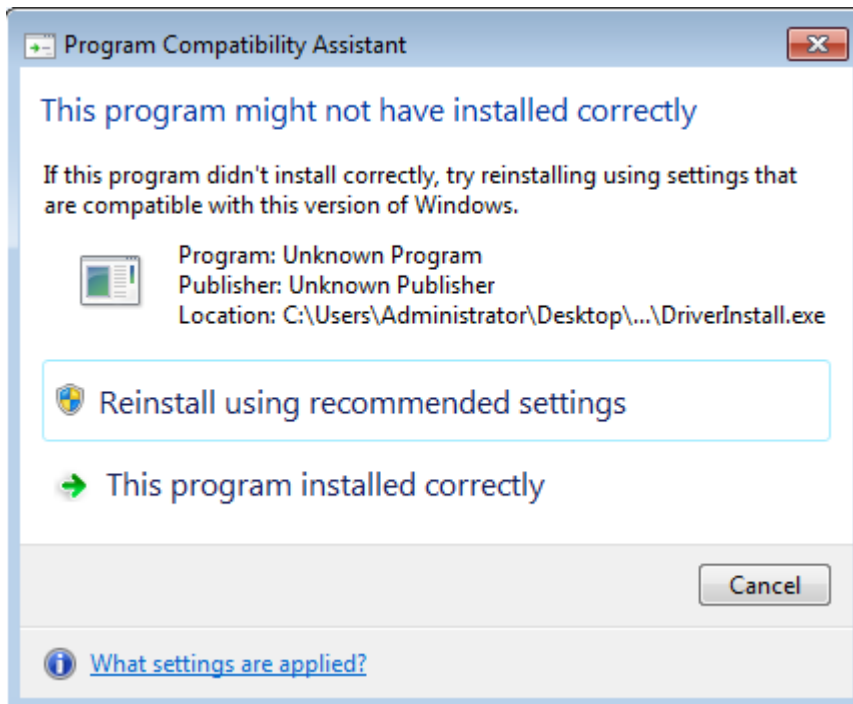
First confirm that the operating system has been activated, if not activated first.

4.2 Enable driver forced signature

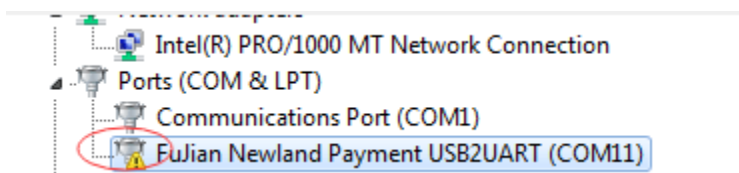
If you turn off the driver of the operating system to force digital signatures, turn it on

4.3 win7*64 System

If the "Service Pack 1" is not installed, the following prompts will often appear at the end of the installation driver.



To the device manager to see, the driver has a yellow exclamation mark



Click on "Computer" , click the right mouse button, click "properties" , See if "Service Pack 1" is installed, as shown below.

View basic information about your computer

Windows edition

Windows 7 Enterprise

Copyright © 2009 Microsoft Corporation. All rights reserved.

Service Pack 1



The “Service Pack 1” interface is not installed as shown below

View basic information about your computer

Windows edition

Windows 7 Enterprise

Copyright © 2009 Microsoft Corporation. All rights reserved.



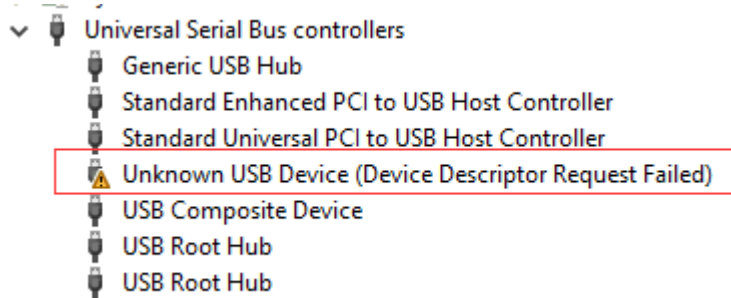
Install the official “Service Pack 1” first.

If “Service Pack 1” is installed, the device manager still has a yellow exclamation point. Install the system security patch Windows6.1-KB3033929-x64.msu in the driver installation directory. If the system patch fails to be installed, the system usually lacks the dependency of the patch. It is recommended to use “Windows update” update system patch.

4.4 Unidentified device

If the device manager displays a message similar to the following, it indicates that the POS fails to interact with the Windows system, try to change the mini usb line, or replace the

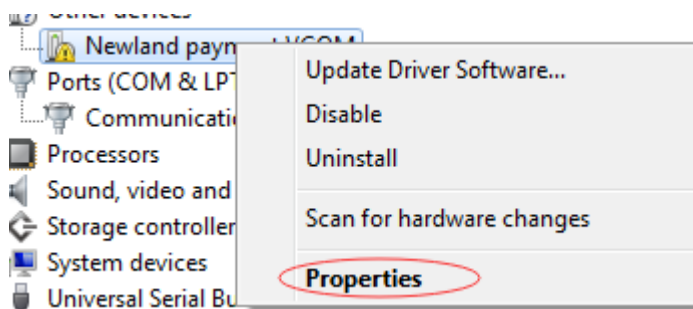
host USB port. If the problem persists, change the host.

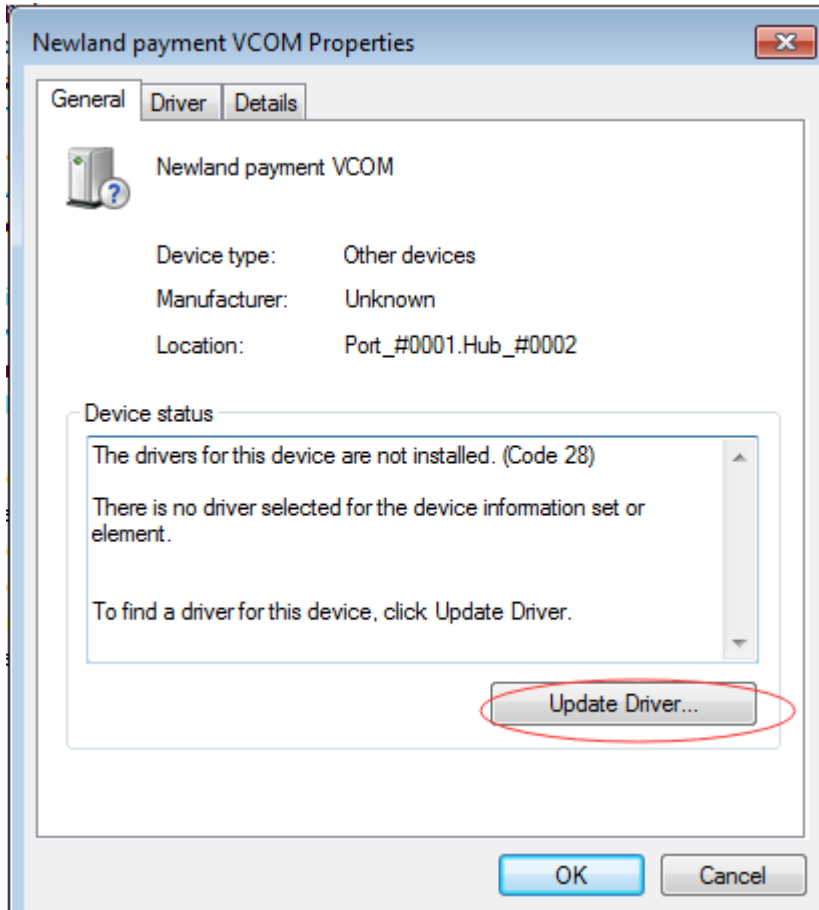


4.5 Manually update the driver

For the case where the device manager has a yellow exclamation point, you can try to manually update the driver as follows:

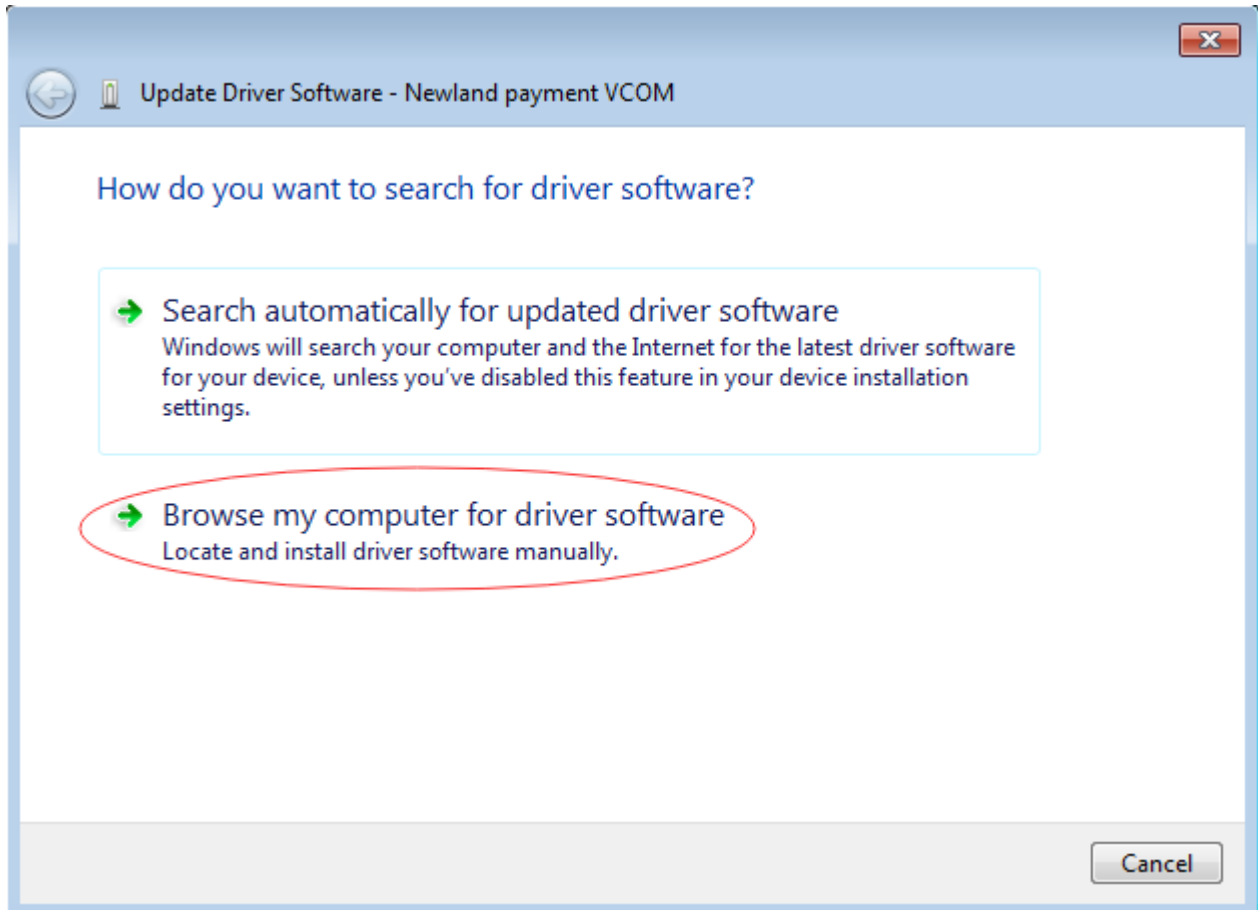
Step 1: Go to the device manager, find the driver, right click, click on "Properties"



**Step 2: Click “Update driver”**

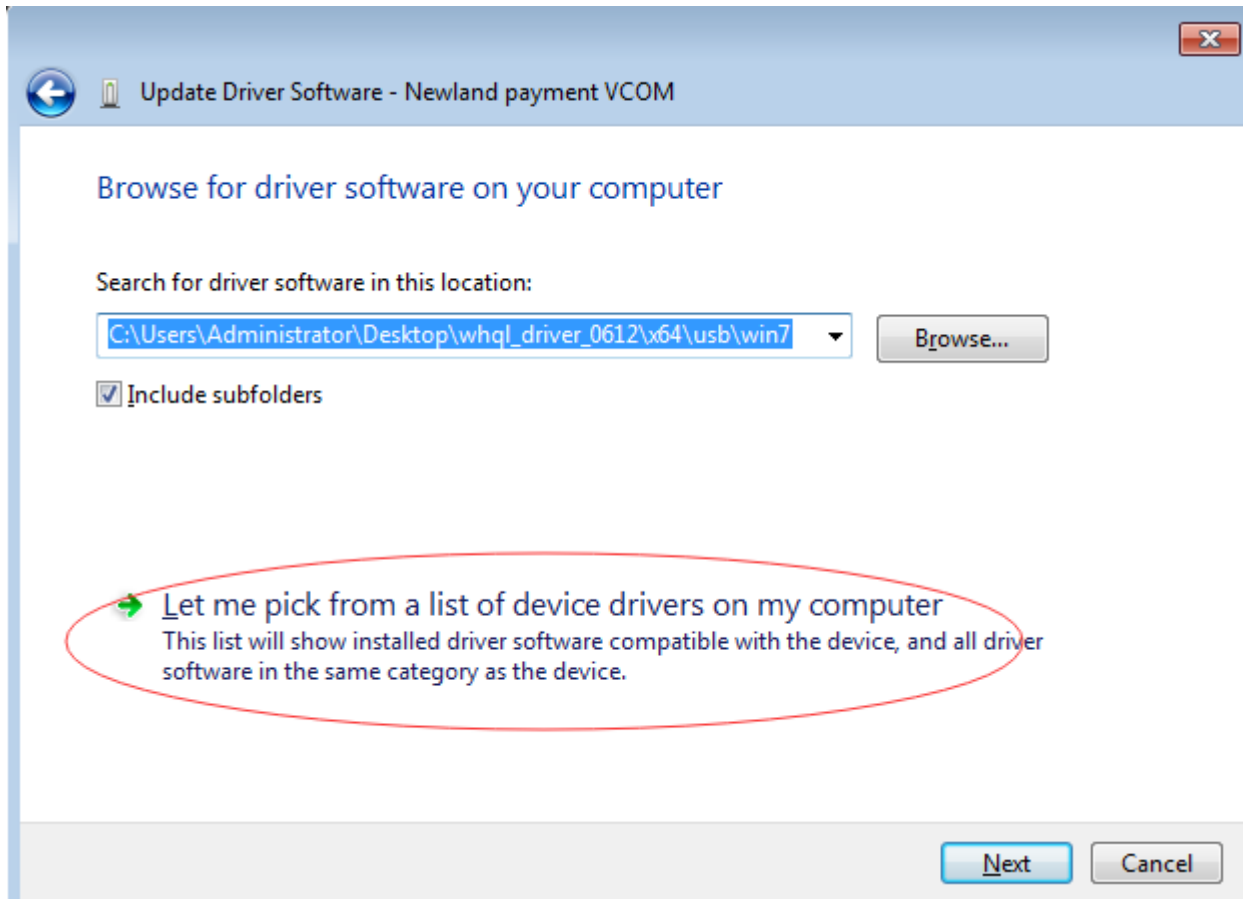


Step 3: Click "Browse my computer for driver software"



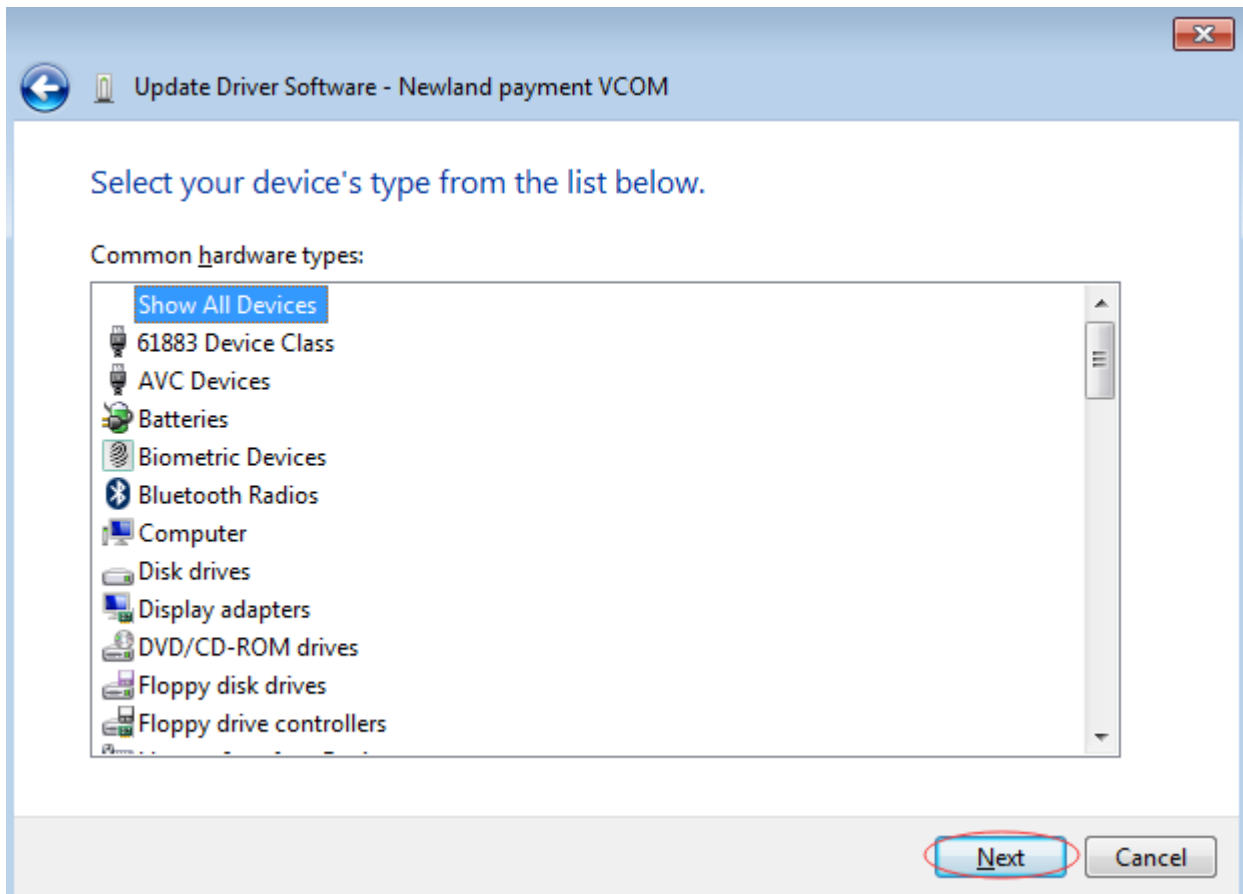


Step 4: Click “Let me pick”

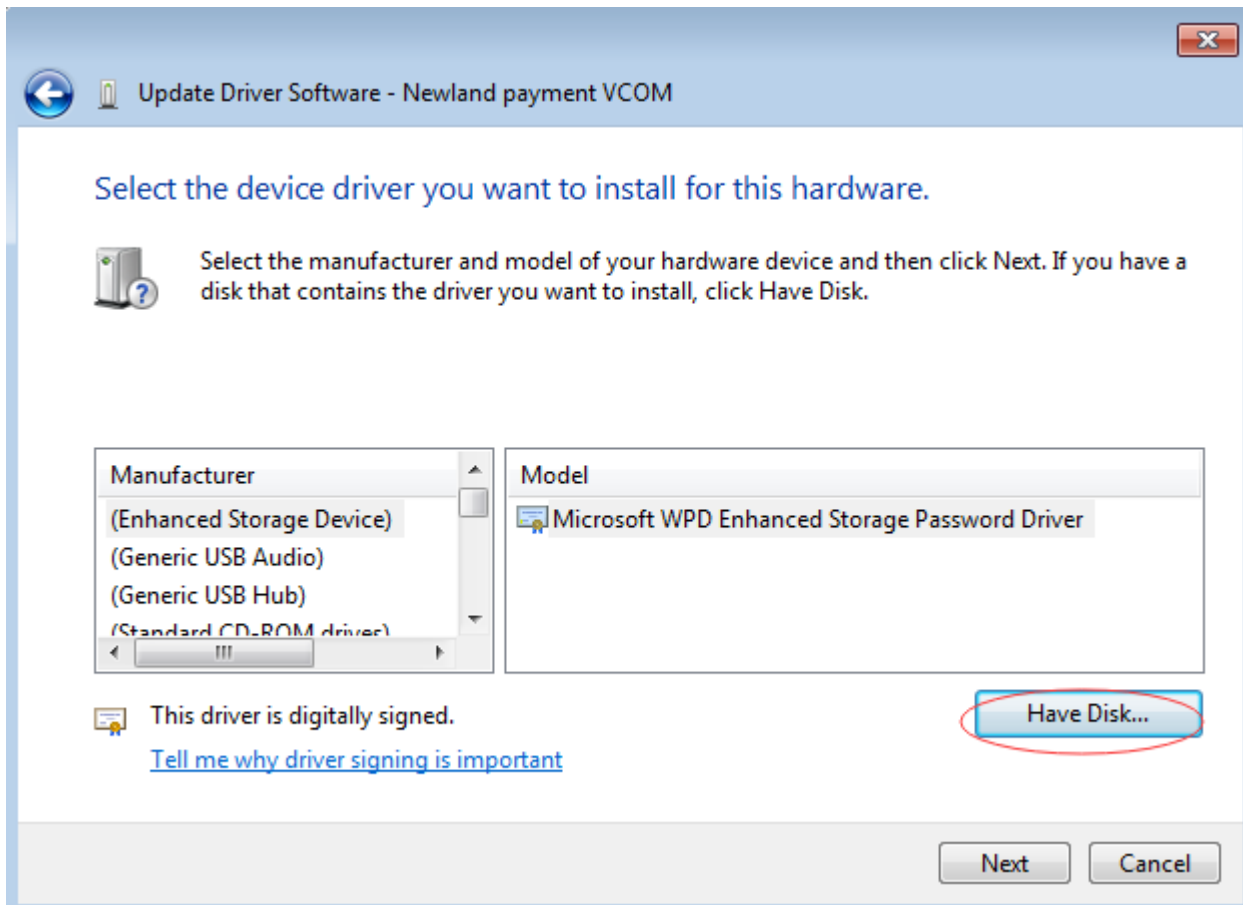




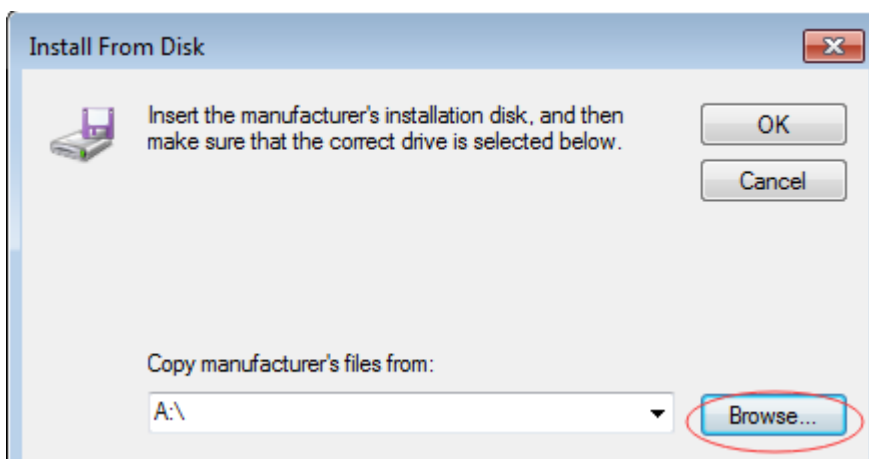
Step 5: Click "Next"



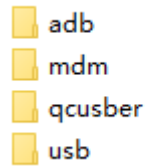
Step 6: Click “Have Disk...”



Step 7: Click “Browse...” to select the driver you want to install In the driver installation directory



In the installation directory, find the x64 or x86 directory according to your operating system.



The driver directory description is as follows:

adb: adb driver , Corresponding to SP930/N910

mdm : modem driver, Corresponding to SP930/N910

qcusber: Virtual COM, Corresponding to SP930/N910

usb: Virtual COM, Corresponding to SP600/SP50/SP60/SP630/SP830