

## Quick Installation Guide

### Wireless LAN Card

## 2. Software Installation

▶ The software installation process under Vista / Win7 / Win8 is roughly the same, take Windows Xp system as an example.

**1** Found New Hardware Wizard

**2**

**3** EB-LINK® Wireless adapter installation guide

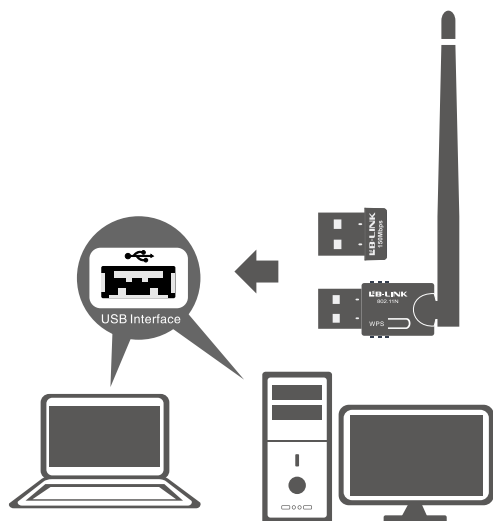
**4** B-Link Wireless LAN - InstallShield Wizard

**5** B-Link Wireless LAN - InstallShield Wizard

**6** B-Link Wireless LAN - InstallShield Wizard

**7** B-Link Wireless LAN - InstallShield Wizard

## 1. Hardware Installation

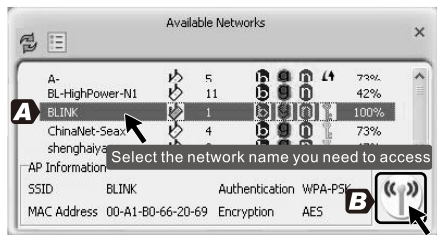


## Mode 1: Wireless network card access to the wireless network

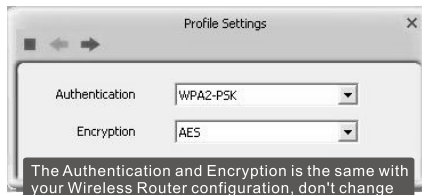
**1**

**2**

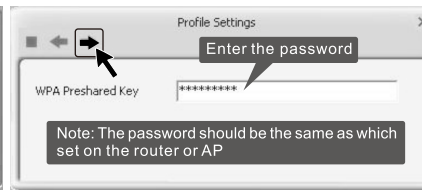
3



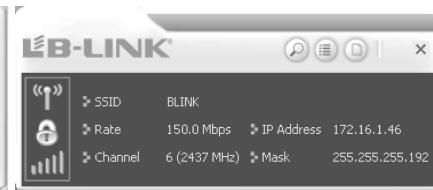
4



5



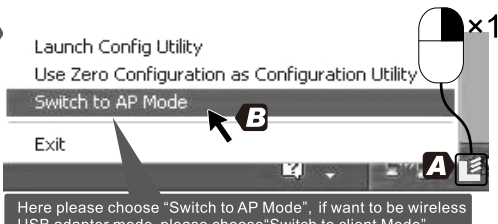
6



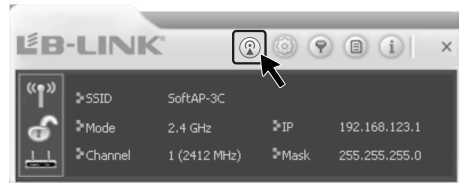
## Mode 2: Wireless NIC set to AP

Before switch to AP mode, turn off the computer's firewall and other protective procedures

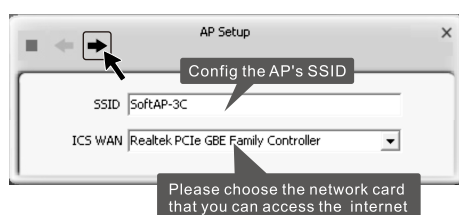
1



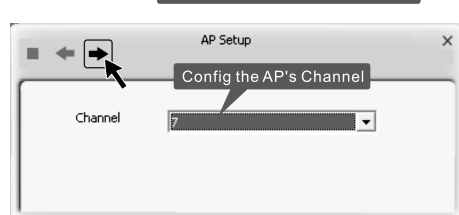
2



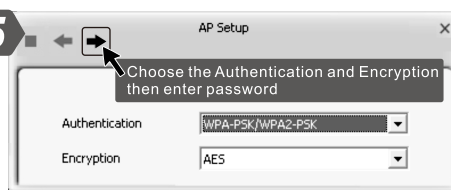
3



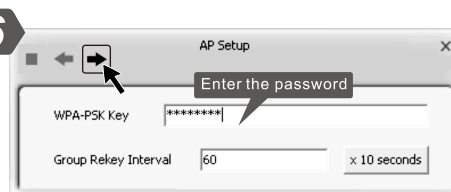
4



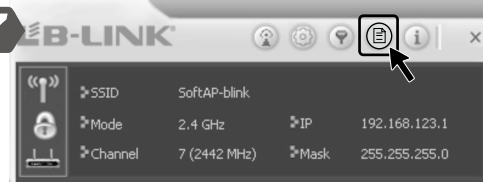
5



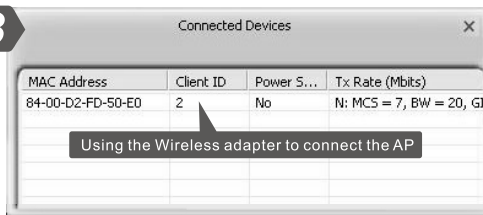
6



7



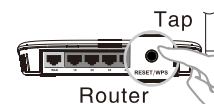
8



## Additional function: WPS (Wi-Fi Security) Set

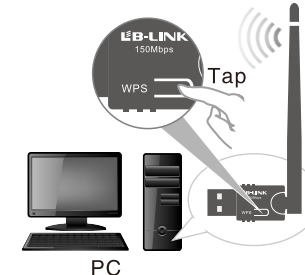
WPS encryption process must be completed within two minutes

1



2

One WPS button encryption



**Note:**  
Press router's WPS button, then press adapter's WPS button in 5 seconds until the adapter's led light is flashing



<http://www.lb-link.cn>